

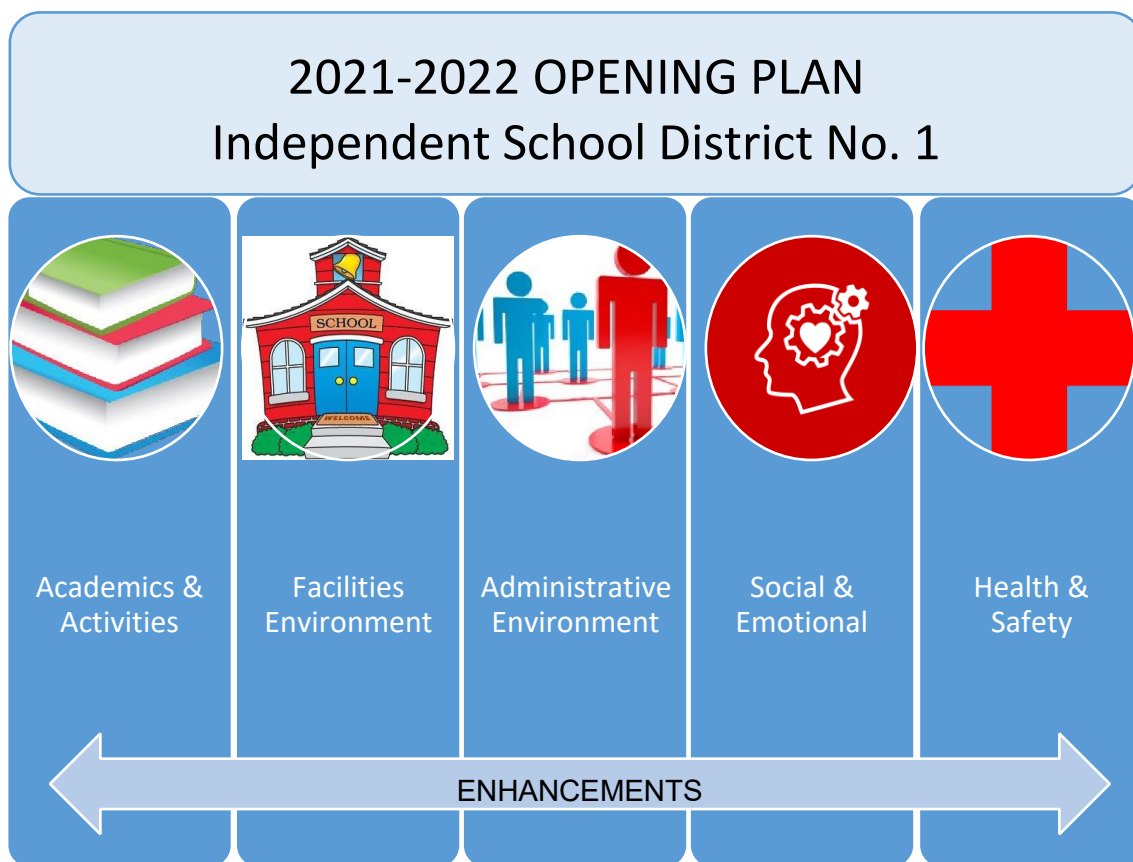
# 2021-2022 OPENING PLAN

## Independent School District No. 1

Lewiston, Idaho

Independent School District No. 1's **Fall 2020 Opening Plan** provided students the opportunity to receive face-to-face instruction for the entire school year. As we move forward in the 2021-2022 school year, the District remains committed to ensuring the safety of our students and staff. The proposed **2021-2022 Opening Plan** provides details for different instructional models to remain responsive to any new developments that may arise in the future.

Independent School District No. 1's **2021-2022 Opening Plan** will ensure full capacity and operations with continued vigilance in health, safety, and academic best practices. The following plan will supplement the Fall 2020-2021 Opening Plan:



2021-2022 Opening Plan

Independent School District No. 1

Original: May 2021

Reviewed w/changes: September 2021

Reviewed w/no changes: 04.12.2022

Reviewed with changes: 07.19.2022

Reviewed w/no changes: 12.07.2022

Reviewed w/no changes: 06.27.2023

Reviewed w/no changes: 12.12.2023

Reviewed with changes: 03.08.2024

### **Academics & Activities**

- Engage students in accelerated learning interventions to reverse crisis-related learning loss and strengthen future learning trends.
- Implement targeted and intensive programs focused on basic literacy and numeracy to support accelerated learning, particularly for those students who are furthest behind their peers.
- Increase technology-based learning strategies to support acceleration and close the gap in learning loss.
- Resume extra-curricular activities, afterschool programs, and sports events per IHSAA guidelines.

### **Facilities Environment**

- Continue custodial services of regularly disinfecting high-touch areas.
- Continue providing all classrooms with cleaning and disinfectant products.
- An electrostatic sprayer will be used in classrooms with a confirmed positive COVID case as well as throughout the building on a weekly basis.
- Face coverings and hand sanitizer are available in all common spaces and classrooms.

### **Administrative Environment**

- Continue to monitor attendance for increases in absenteeism.
- Continue to communicate with stakeholders with regards to any changes to protocols.

### **Social & Emotional**

- Continue to monitor/screen staff and students regarding the need for additional support services.
- Continue allocated time for staff/student check-ins and promotion of wellness strategies.
- Continue to refer for support services, as needed.
- Engage parents in the school system, through:
  - Parent Teacher Associations
  - Multiple Social Media Platforms
    - Facebook

▪ District and School Websites ○ Open  
Houses/Back to School Activities **Health & Safety**

- Continue ongoing contact with the local health department for updates on community re-emergence indicators.
- Continue to follow safety protocols with handwashing and hand sanitizer.
- Continue with “Sick Child” protocols.
- Continue monitoring for re-emergence of COVID-19 symptoms in staff and students.
- Continue to follow protocols established in the event of exposure or positive test results.
- Continue providing face coverings in all building entrances and classrooms.
- Physical distancing of 3 ft. will be practiced when possible.